



FMM



MIDA-FMM National Investment Seminar 2024

ECRL@Selangor: Value-adding Green Disruptor for Land Transport

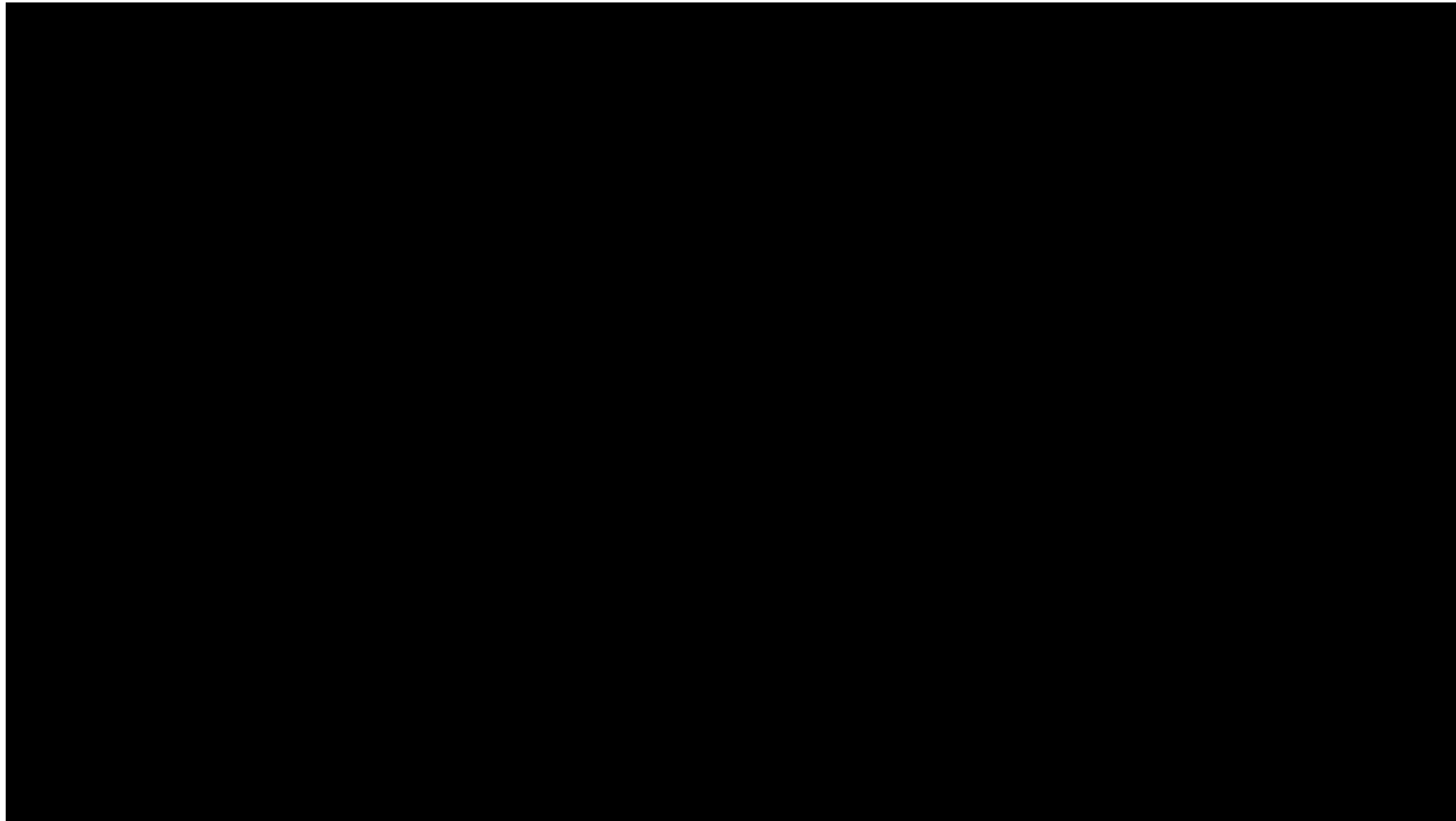
13th June 2024

Malaysia Rail Link Sdn Bhd

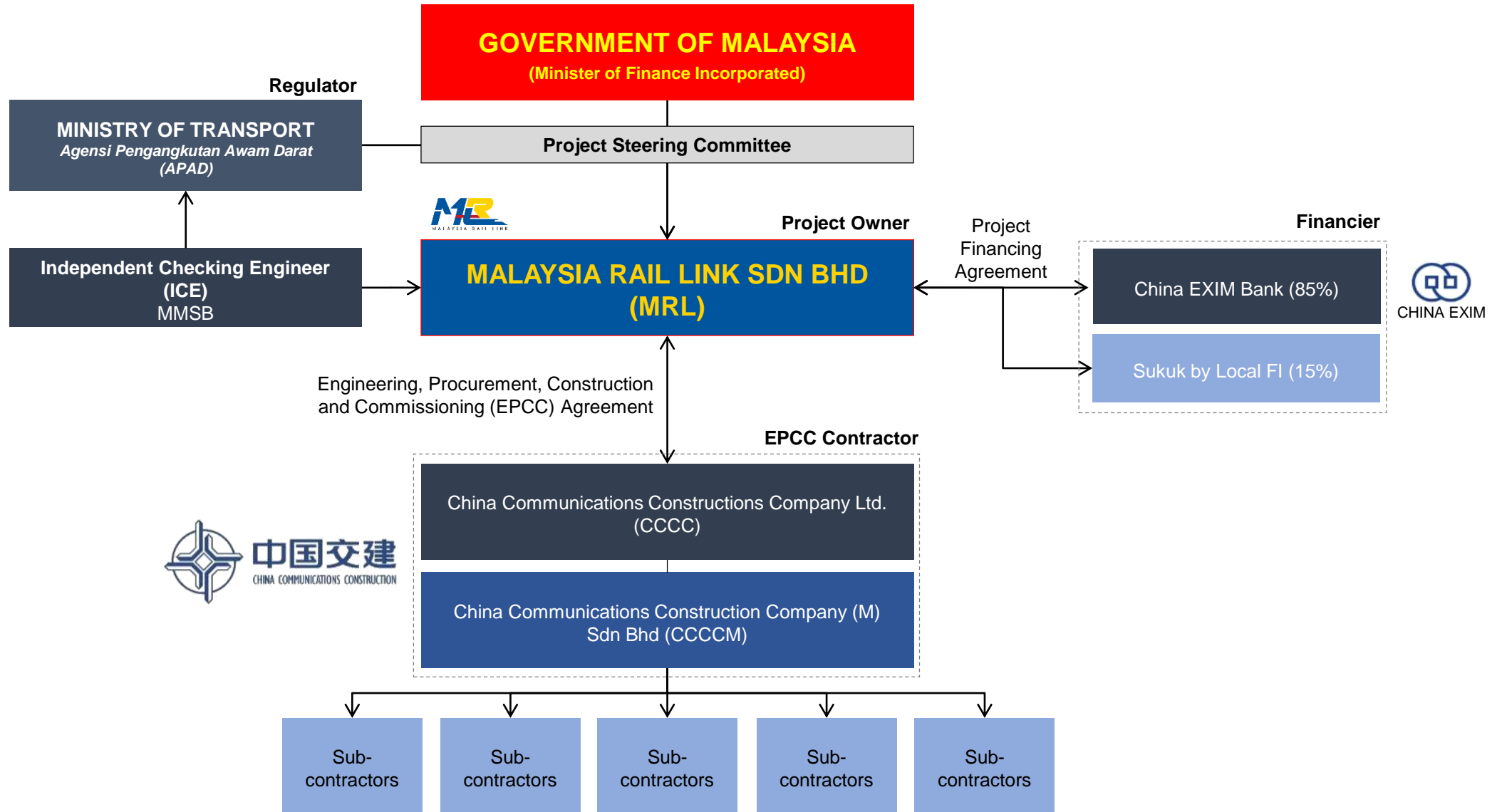


- Project Introduction Video
- ECRL @ Selangor
- ECRL Features and Services

Project Introduction Video



ECRL Project Structure

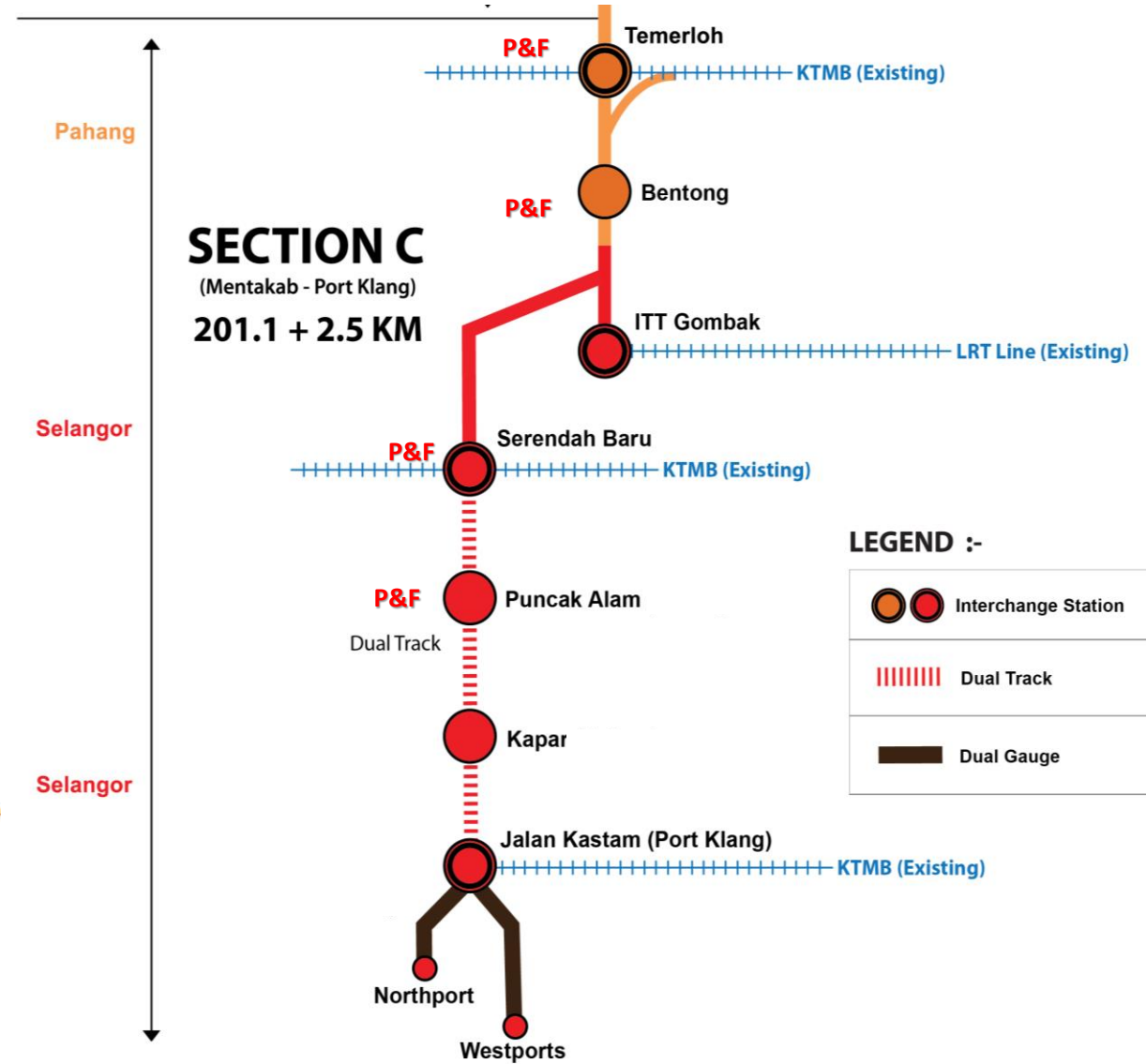
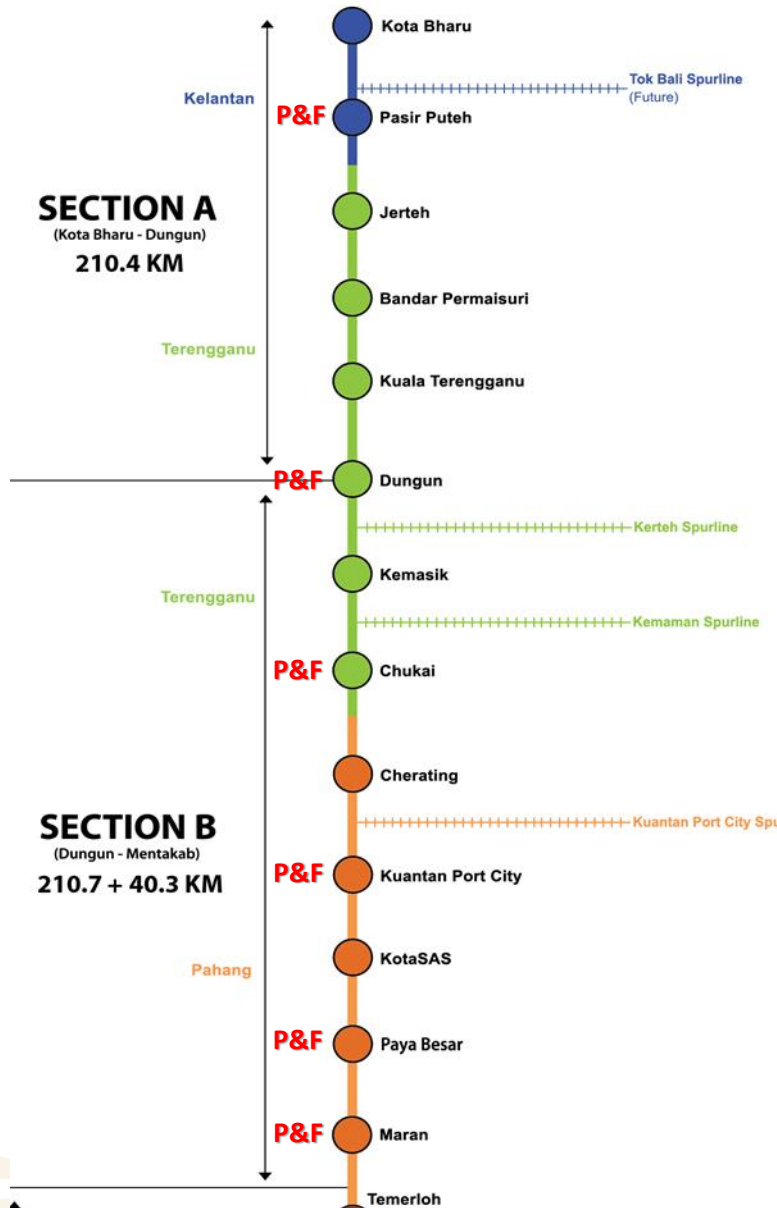


**20
passenger
stations**

**10 freight
stations**

**Enhancement in
alignment:**

Direct connection
to Westports and
Northport via
dual gauge upgrade



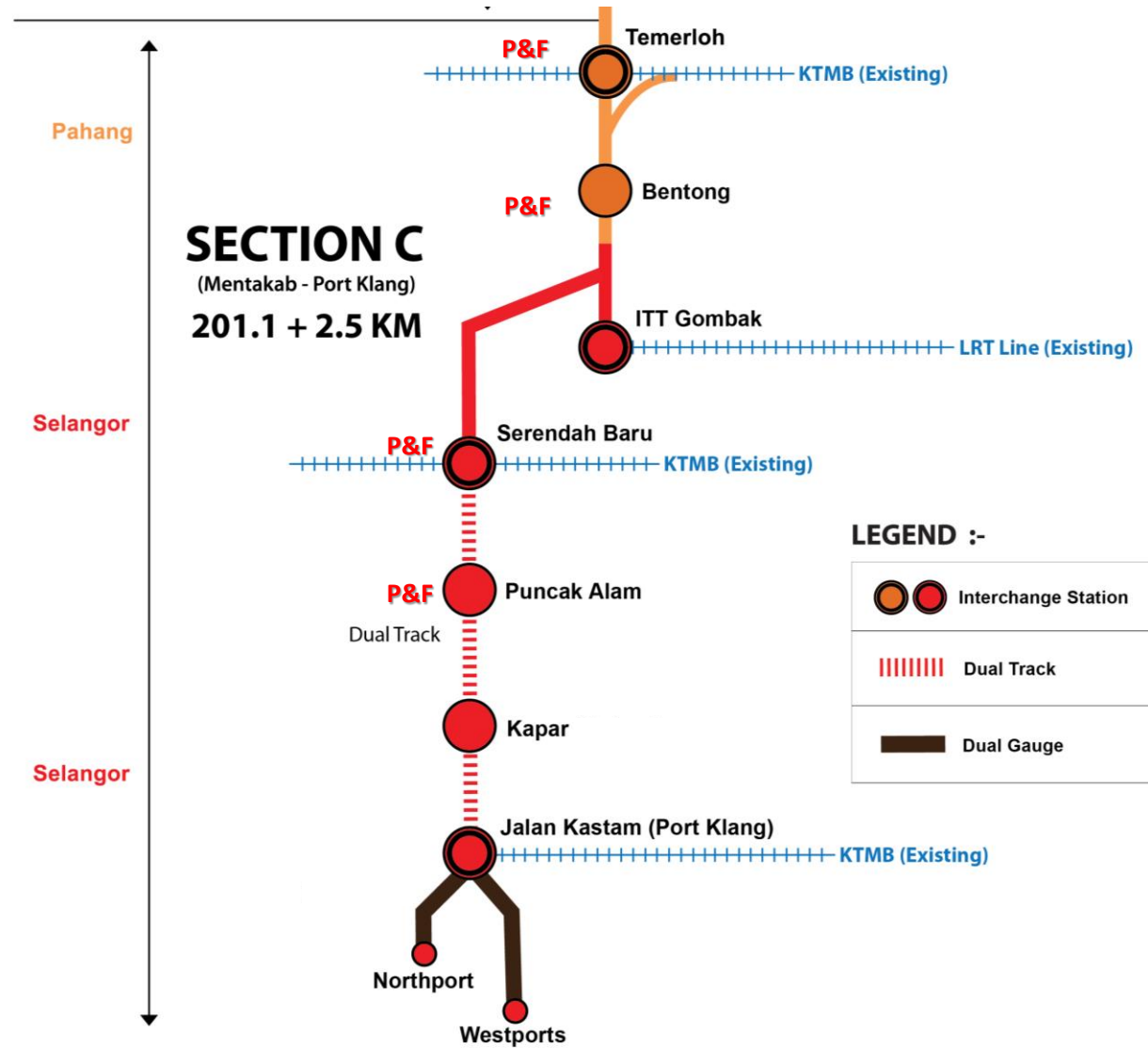
ECRL @ Selangor

5 passenger stations

2 freight stations + 2 railport terminals

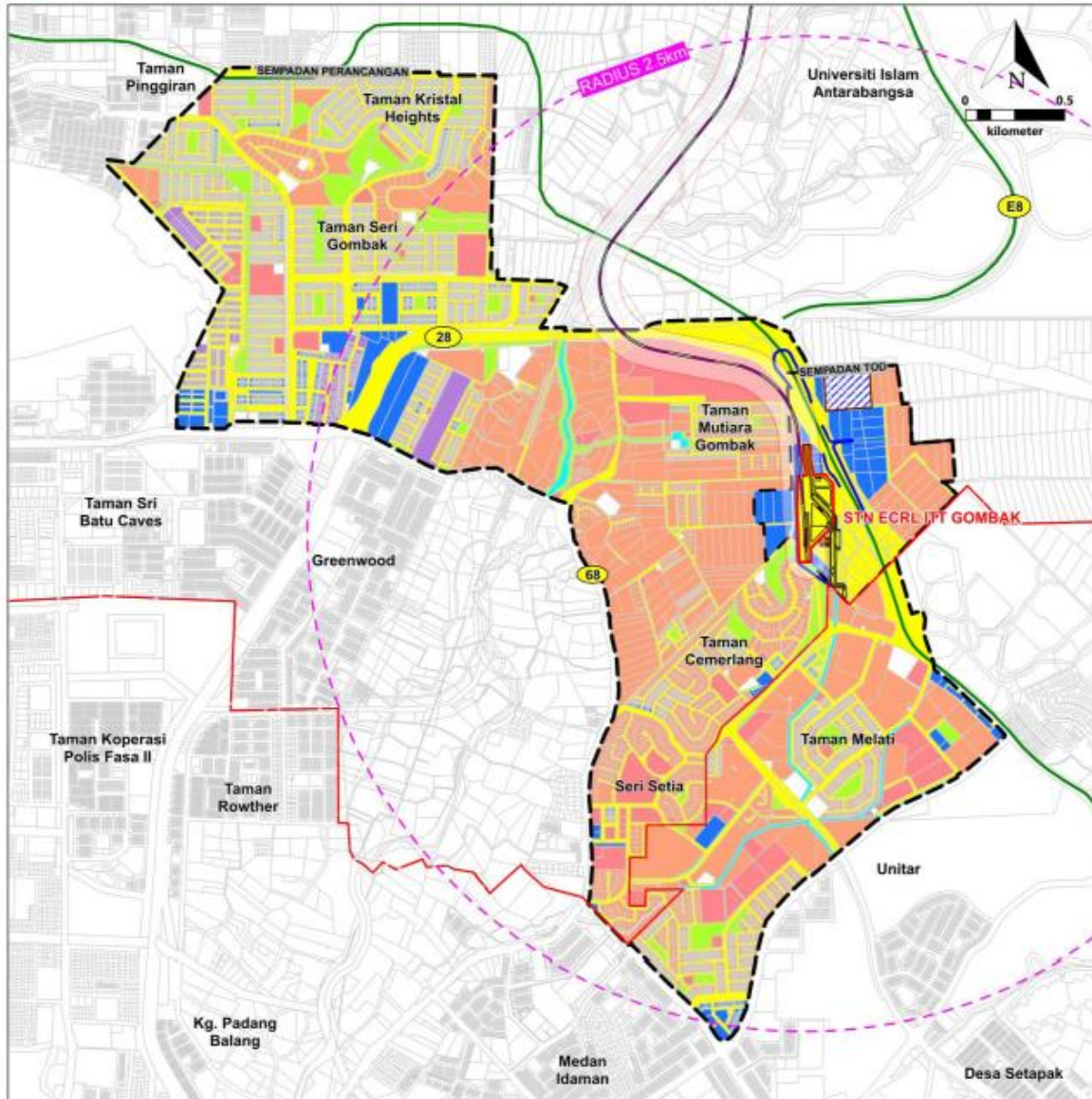
Enhancement in alignment:

Direct connection to Westports and Northport via dual gauge upgrade



ECRL Will Encourage Mobility for Commerce and Tourism

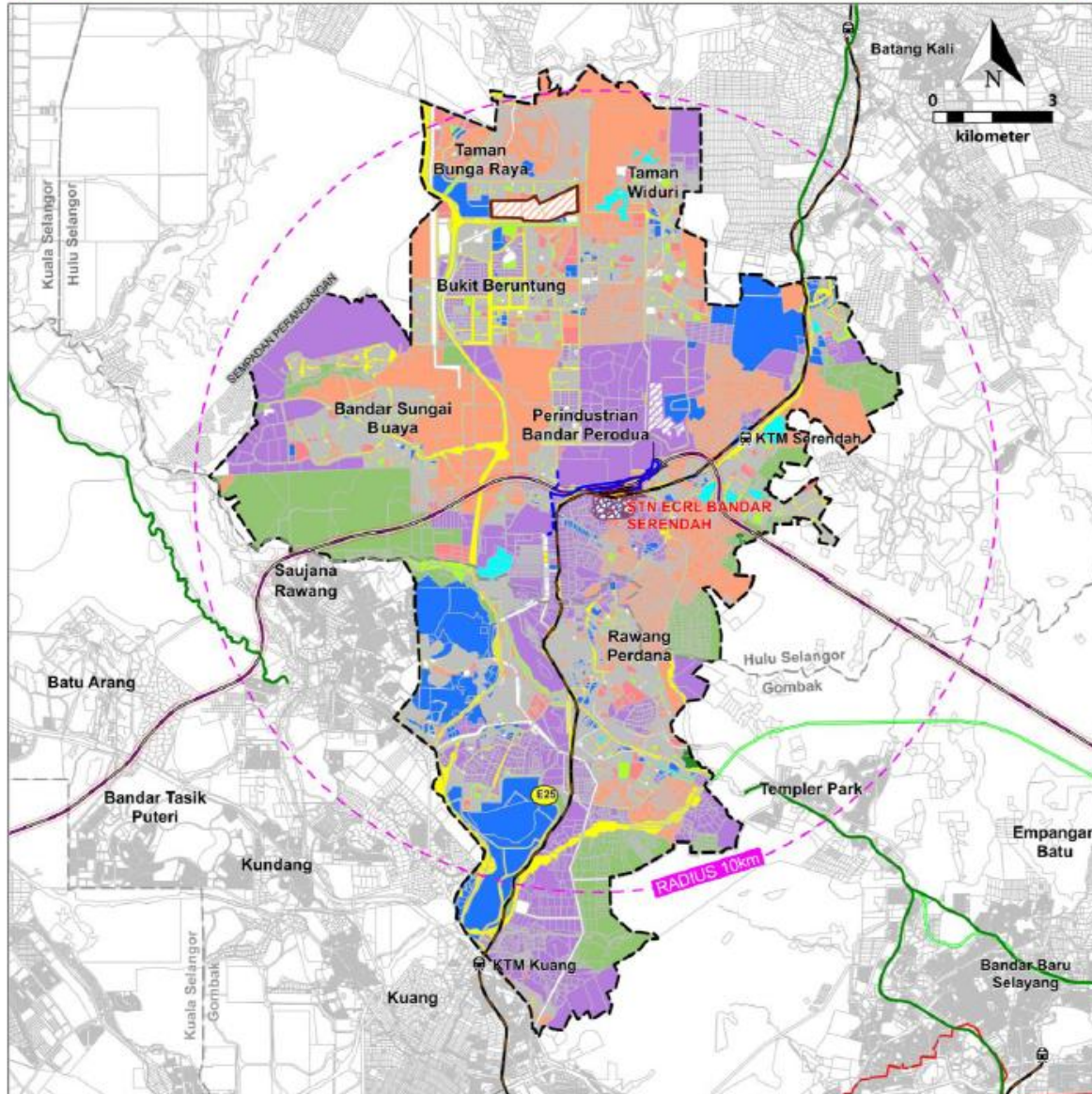
ITT Gombak ECRL Station Overall Proposed Plan



- ### ITT Gombak ECRL Station
- Passenger Station
 - Connected with ITT Gombak
 - Surrounded by Residential Area
 - Proximity with International Islamic University Malaysia



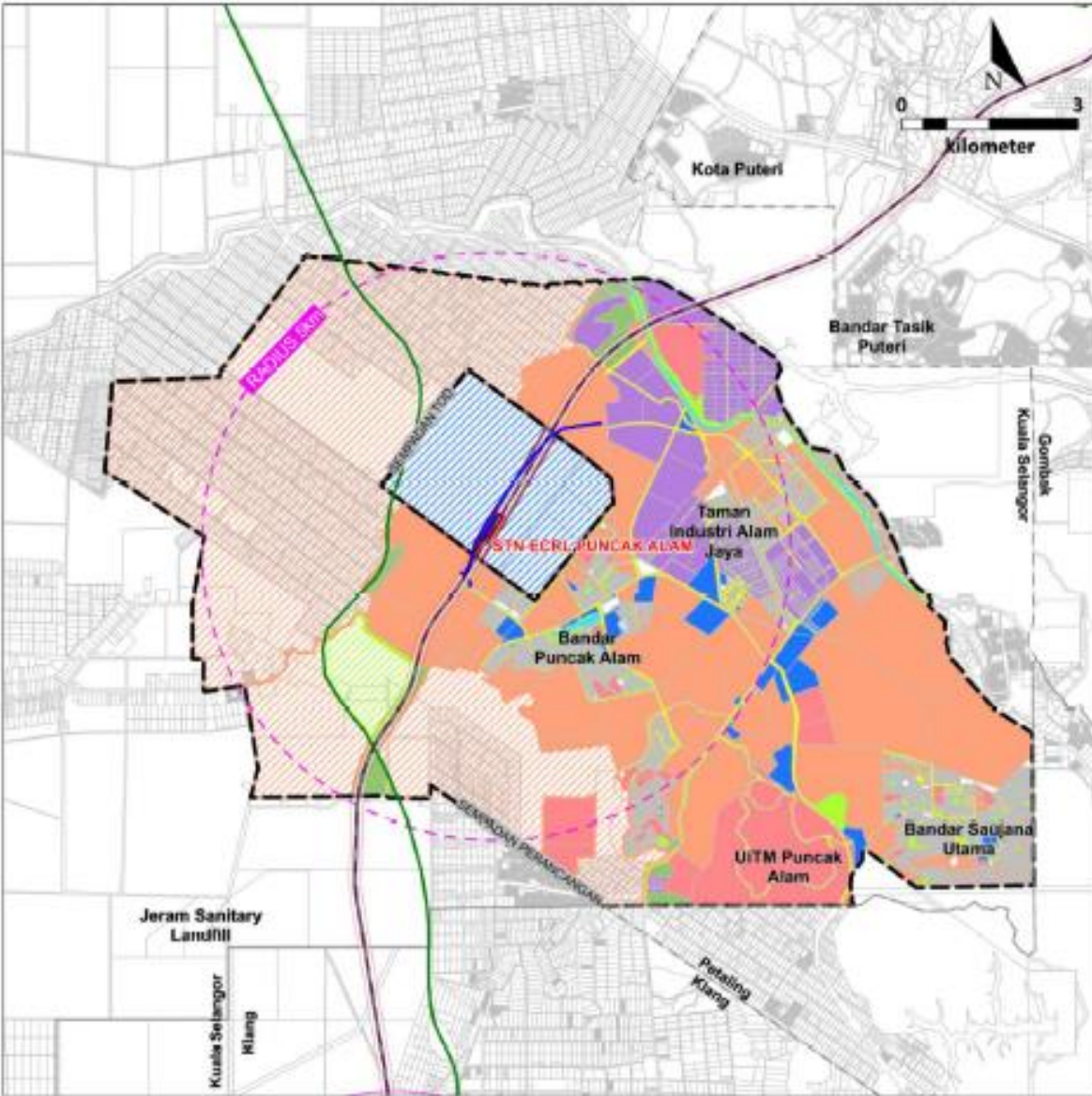
Bandar Serendah ECRL Station Overall Proposed Plan



- ### Bandar Serendah ECRL Station
- Passenger & Freight Stations
 - Interchange Station for Passenger and Freight
 - Perodua Facility
 - Automotive Hub



Puncak Alam ECRL Station Overall Proposed Plan

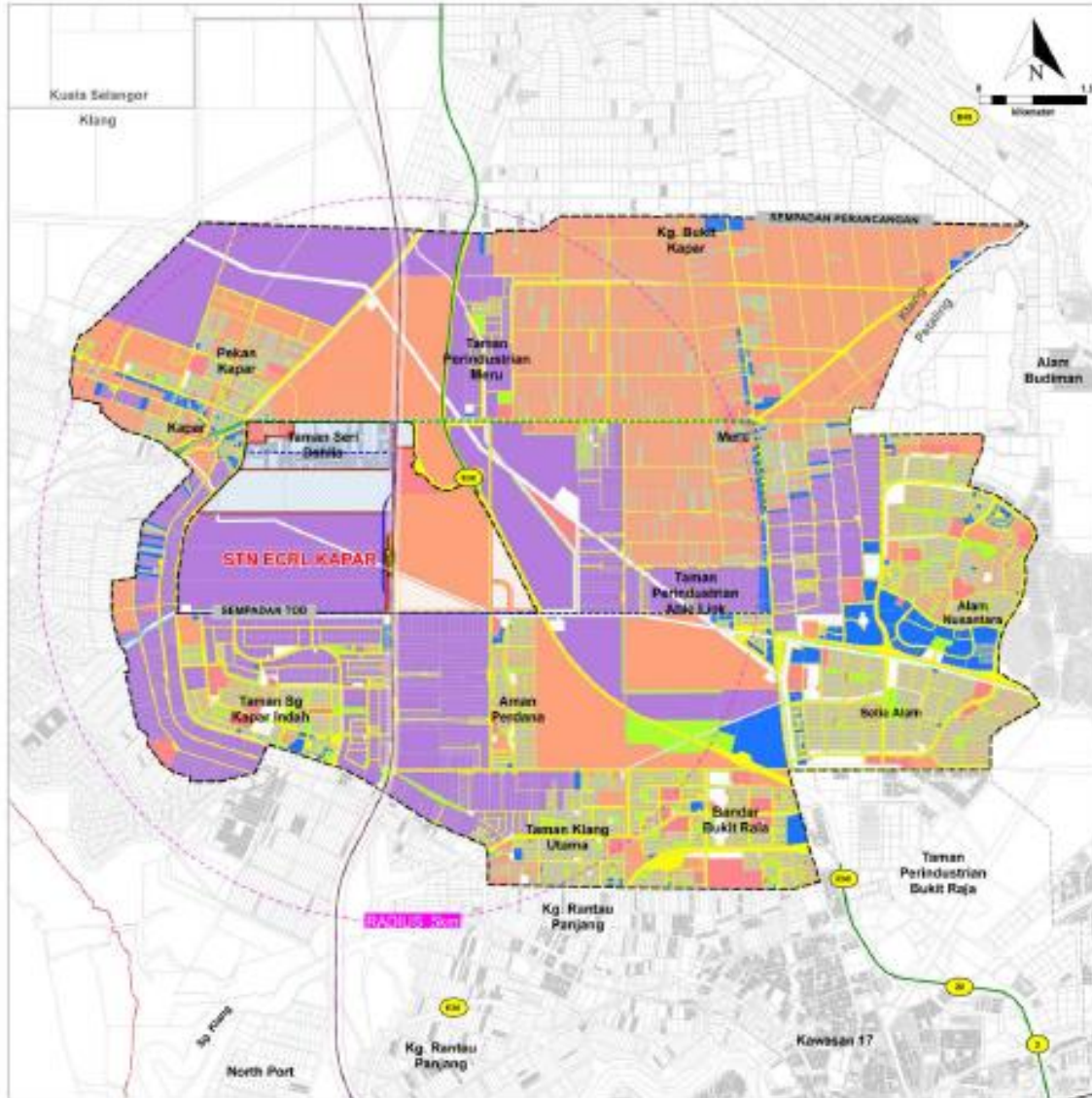


Puncak Alam ECRL Station

- Passenger + Freight Station
- **Potential steel products distribution hub – manufacturing of steel finished products can be established here**
- Surrounded by Industrial & Residential Area
- Eco-Business Park Puncak Alam
- Proximity with Universiti Teknologi Mara Puncak Alam



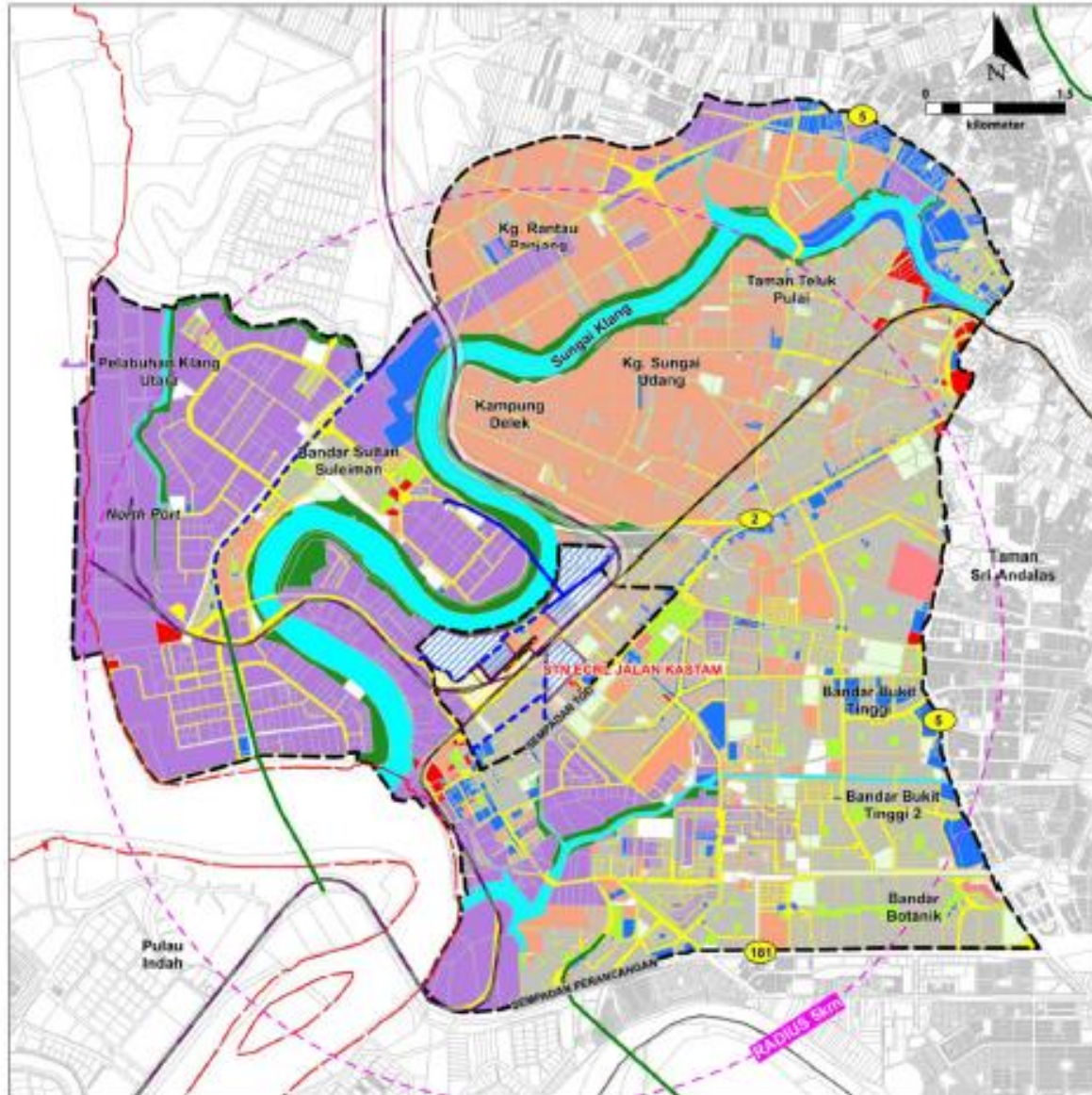
Kapar ECRL Station Overall Proposed Plan



- ### Kapar ECRL Station
- Passenger Station
 - Surrounded by Residential Area
 - Light and Medium Industrial Area
 - New Kapar Public Hospital



Jalan Kastam ECRL Station Overall Proposed Plan

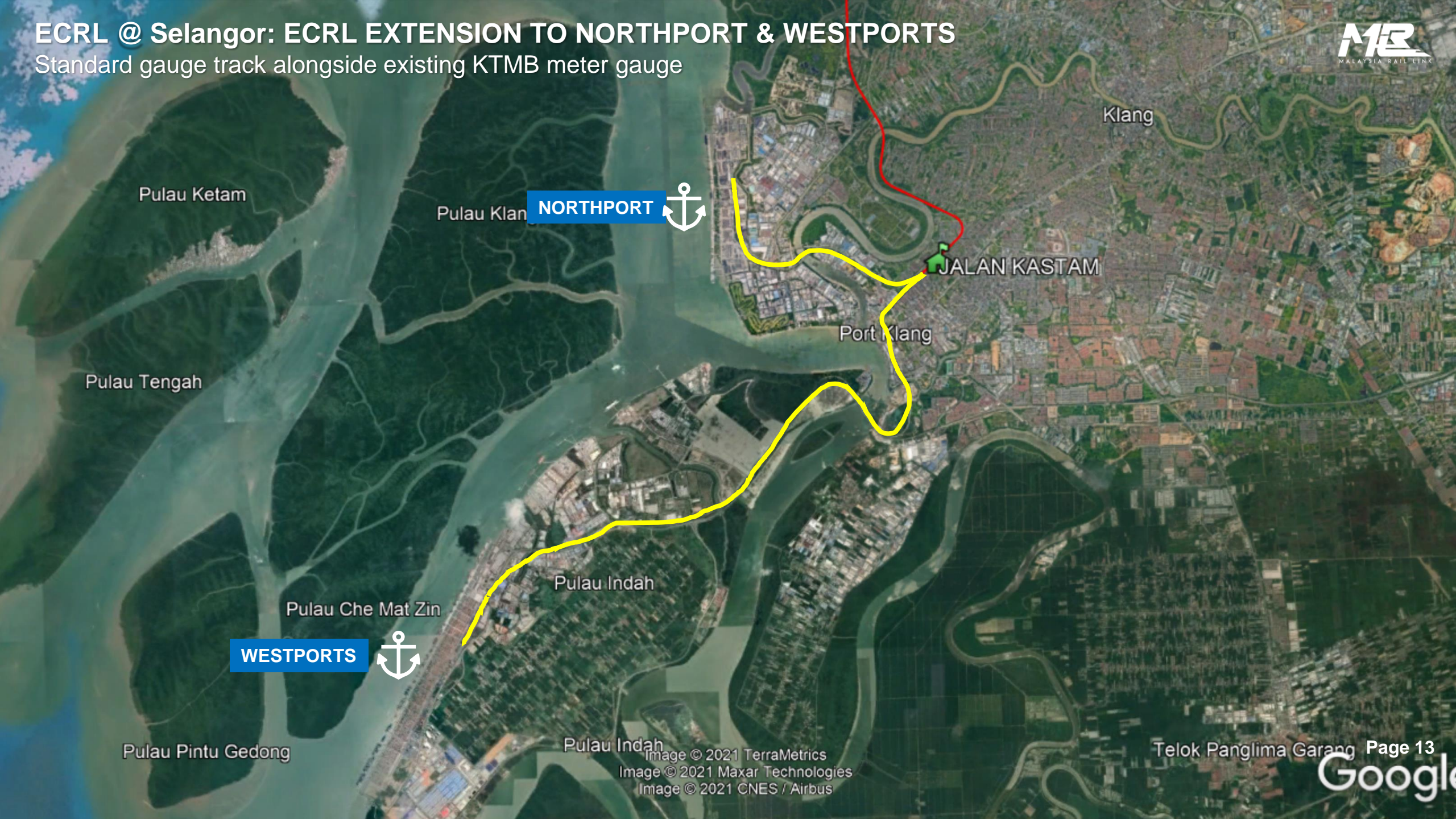


- ### Jalan Kastam ECRL Station
- Passenger Station
 - Surrounded by Residential Area



ECRL @ Selangor: ECRL EXTENSION TO NORTHPORT & WESTPORTS

Standard gauge track alongside existing KTMB meter gauge



NORTHPORT



WESTPORTS



Klang

JALAN KASTAM

Port Klang

Pulau Indah

Pulau Che Mat Zin

Pulau Ketam

Pulau Tengah

Pulau Pintu Gedong

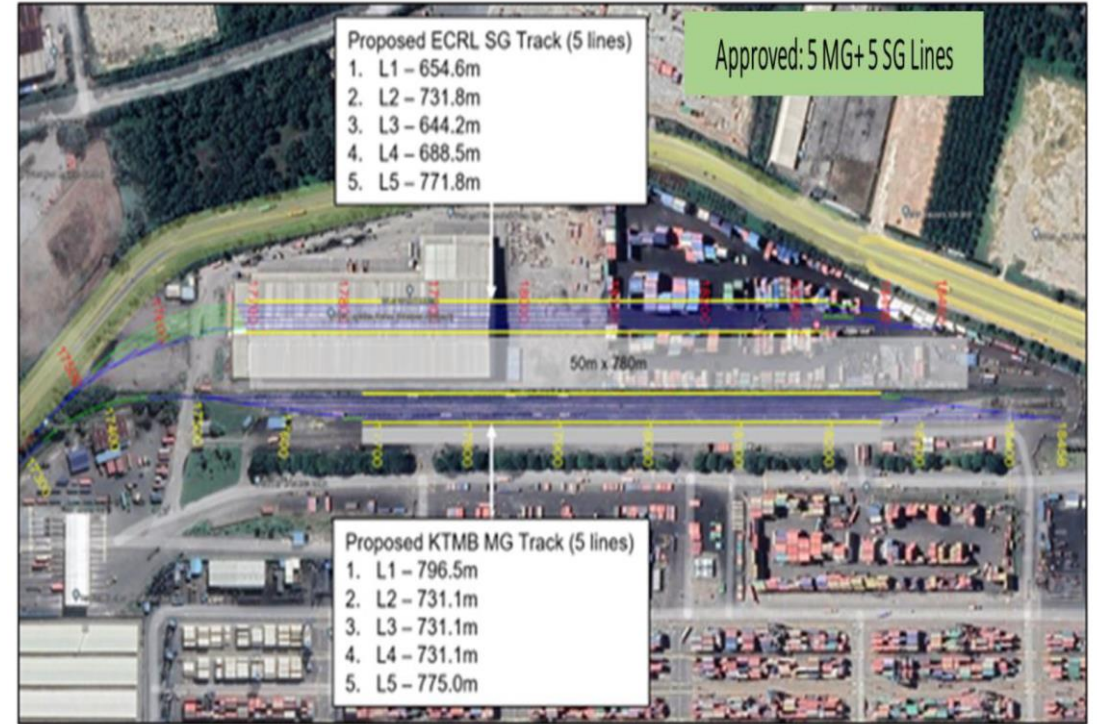
Pulau Indah

Image © 2021 TerraMetrics
Image © 2021 Maxar Technologies
Image © 2021 CNES / Airbus



NORTHPORT ECRL ALIGNMENT

LATEST UPDATE 22/12/2023

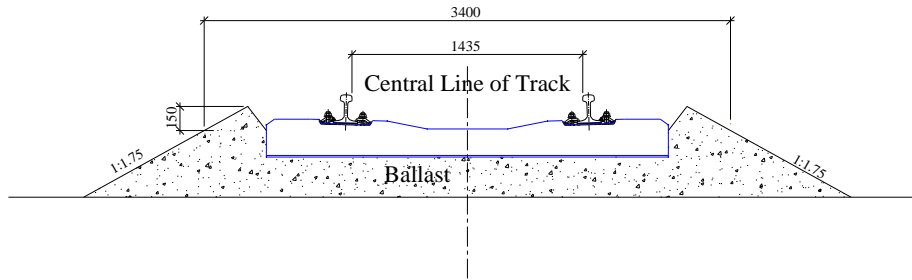


Westports



Gauge

Standard gauge (1.435m)



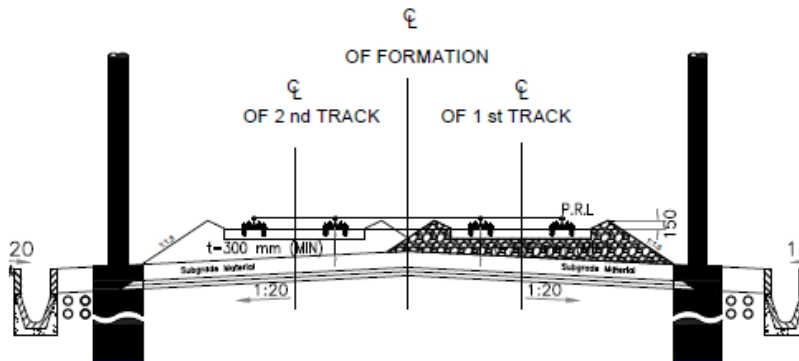
Power

Electrification (25,000 Volt)



Track

Single track based on double track formation design



Operating Speed

160 km/hr (passenger service)
80 km/hr (freight/cargo services)



EMU



Locomotive

Power Model: **EMU**
Train Overall Length: **153.0m**
Wide : **3300mm**
Speed : **160 km/hr**
Seating Capacity: **440 Orang**

Loading Model : **C0-C0**
Speed : **80 km/hr**
Pulling strength power : **5400kw**
Loading Weight: **25t**

2027: 11 nos*



EMU

Model	Power centralized model
Train formation	1M+5T
Train total length	153m

Width	3.3m
Maximum Operating speed	160km/h
Seating capacity	440

2027: 18 nos*



Locomotive

Axle model	C0-C0
Length	22.5m
Width	3.1m

Design speed	80km/h
Axle load	25 T
Traction tonnage	3500T

2027: 1,003 nos*



Box car wagons



Container flat-bed wagon

* Numbers indicated are provisional

- Witnessed by YBM Loke Siew Fook, Minister of Malaysia's Transportation
- To sign with shipper and collaborative partner indicating potential long-term collaborations for the East Coast Rail Link's (ECRL) freight transportation services
- poised to spur various industry players to switch the movement of cargo from road to rail (modal share).



Thank You

For enquiries, kindly contact:

**Malaysia Rail Link Sdn Bhd
Level 15, Menara 1 Dutamas, Solaris Dutamas,
No. 1, Jalan Dutamas 1, 50480 Kuala Lumpur.**